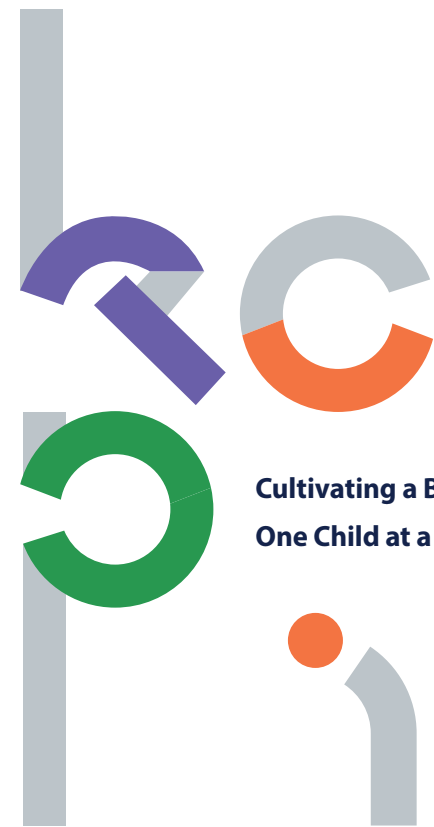
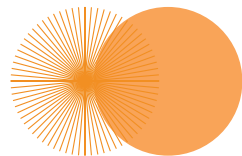
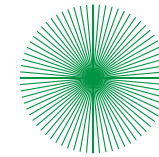
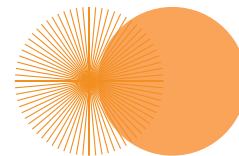




Cultivating a Better Future:  
One Child at a Time

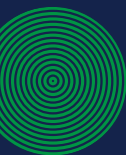




# Korea Childcare Promotion Institute

5	Message from the Director
6	Basis & Purpose of Establishment
7	Corporate Identity (CI)
8	History & Milestones
10	Mission & Vision
11	Strategic Goals & Key Initiatives
12	Organizational Structure
14	Major Programs & Services

**Cultivating a Better Future: One Child at a Time**  
**Korea Childcare Promotion Institute**



## Message from the Director



Dear Readers,

My name is Yong-Nam Cho, and I am the Director of the Korea Childcare Promotion Institute (KCPI). KCPI is a public institution under the Ministry of Education established by Article 8 of the Child Care Act.

Our mission is to support the healthy growth of young children and foster a nurturing environment for parents, ultimately contributing to a sustainable future for Korea.

Since our inception as a nonprofit foundation in 2010, KCPI has evolved significantly. In 2019, we were re-established as a statutory organization, strengthening our role in supporting childcare centers, enhancing the public foundation of early childhood education and care, conducting policy research, managing teacher qualifications and professional development, and assisting child-rearing in the family. Through these efforts, we have contributed to implementing policies that bring about tangible differences in childcare settings.

Our role has expanded even further after the challenges of Korea's declining birthrate and the transition toward an integrated early childhood education and care system. In June 2022, the government designated us as the Central Support Center for Childcare, reinforcing our role as a comprehensive support institution for early childhood and parenting policies. Furthermore, in June 2024, KCPI officially transitioned to a public institution under the Ministry of Education and has since been striving for the integration and development of early childhood education and childcare.

The well-being of young children is at the heart of everything we do. As Korea's leading hub for early childhood policy support, we actively serve as an integrated platform that provides comprehensive support for early childhood and parenting policies.

We appreciate your continued interest and support as KCPI embarks on a journey of change and growth. We look forward to your warm encouragement and partnership along the way.

6th Director of Korea Childcare Promotion Institute **Cho Yong-Nam**

# Basis & Purpose of Establishment

## Establishment Basis

The Child Care Act (Article 8): Establishment and Operation of Korea Childcare Promotion Institute

## Establishment Purpose

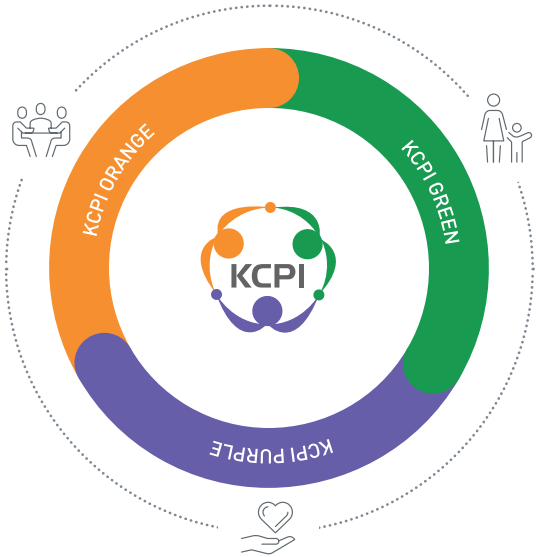
Korea Childcare Promotion Institute was established to improve the quality of childcare services and systematically support childcare policies, contributing to the healthy and happy growth and development of infants and young children.



# Corporate Identity (CI)

## KCPI Identity

The emblem of Korea Childcare Promotion Institute (KCPI) symbolizes hands joined together, representing the collective efforts to support young children's healthy growth and development. It embodies our vision of hopeful progress through collaboration and commitment.



- GREEN** — Represents support for young children, symbolizing their health and well-being
- ORANGE** — Represents support for parents, symbolizing warmth, love, and dedication to early childhood care
- PURPLE** — Represents support for childcare professionals, symbolizing expertise, trust, and commitment to quality childcare

# History & Milestones



'09

Dec.

- Established as a non-profit foundation under the Civil Act

'10

Jan.

- Started operations as Korea Childcare Promotion Institute

'12

Jan.

- Designated as a public institution under the Ministry of Health and Welfare

'18

Dec.

- Child Care Act revised and announced
  - Adoption of a mandatory evaluation system for childcare centers and establishment of Korea Childcare Promotion Institute as a statutory institution



'19

Jan. Jun.

- Jan.
  - Designated as a quasi-governmental institution (an entrusted execution type) under the Ministry of Health and Welfare

- Jun.
  - Launched as a statutory institution under Article 8 of the Child Care Act, Implemented a mandatory evaluation system for childcare centers

'22

Jun.

- Designated as and launched operations of the Central Support Center for Childcare
  - Designated the Korea Childcare Promotion Institute as the Central Support Center for Childcare under Article 7 of the Child Care Act

'23

Jan.

- Designated as an other public institution

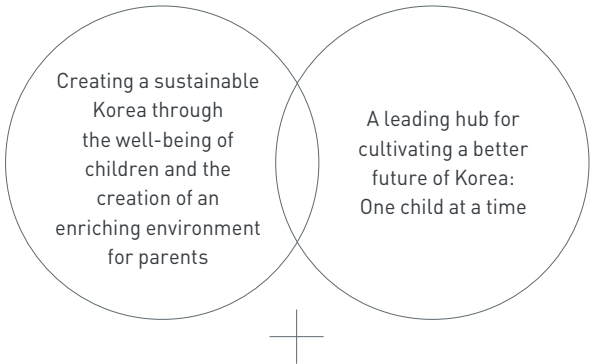
'24

Jun.

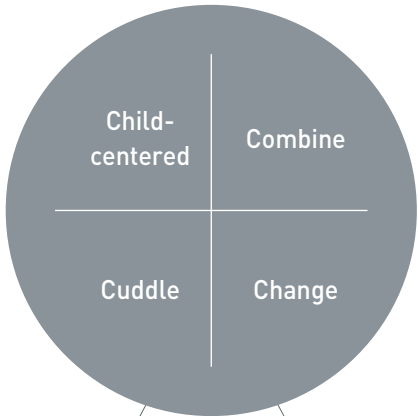
- Transferred to the Ministry of Education following the revision of the Government Organization Act

Mission & Vision

Mission & Vision



Core Values



Management Objectives(2029)



Strategic Goals & Key Initiatives

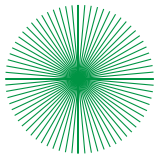
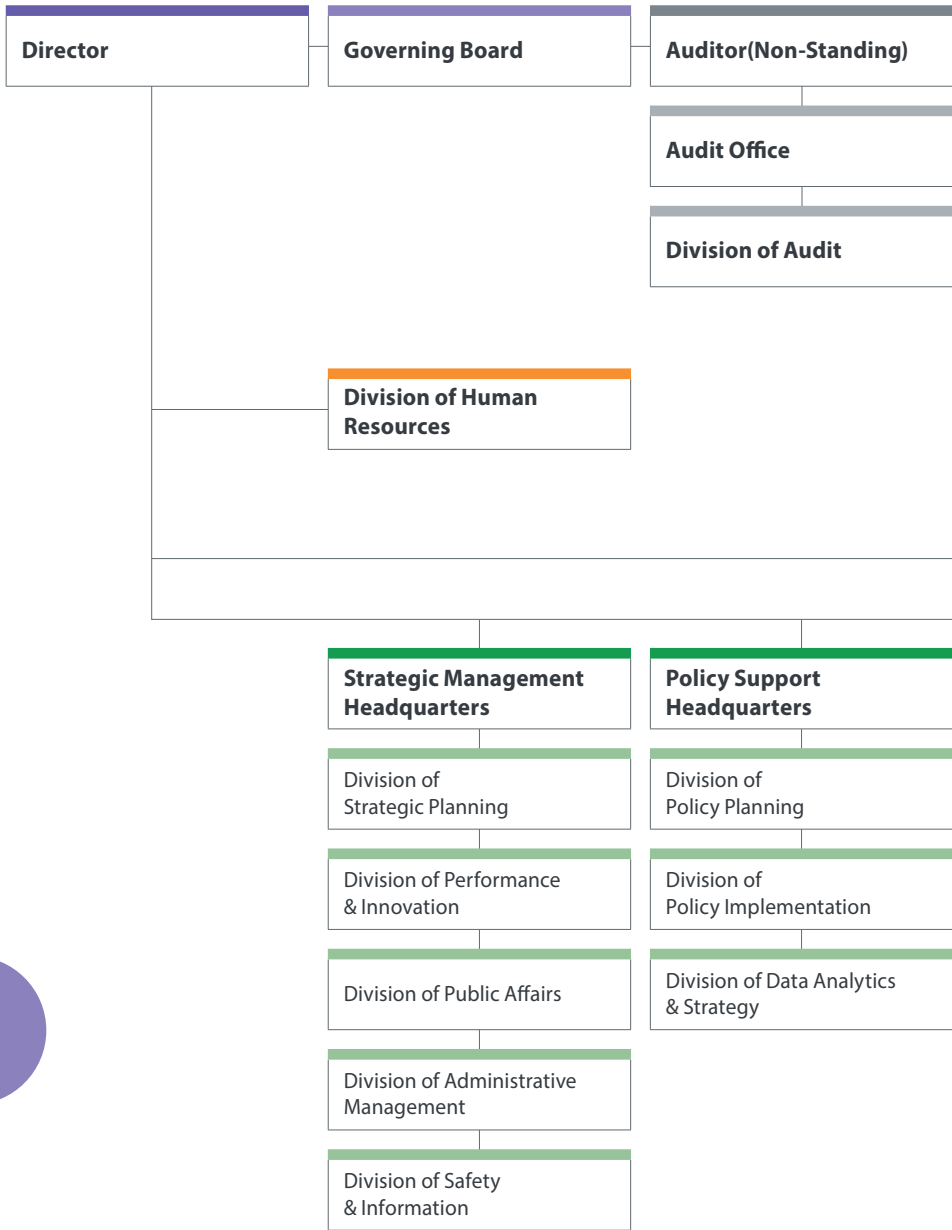
Strategic Goals



Strategic Initiatives



# Organizational Structure



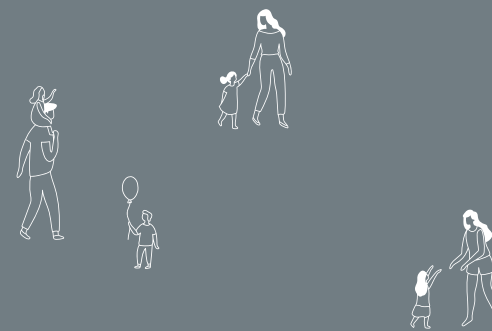


# Major Programs & Services

## KCPI: A leading hub for Cultivating a Better Future : One Child at a Time

The Korea Childcare Promotion Institute(KCPI) is a public institution dedicated to enhancing the quality of childcare services and systematically supporting childcare policies to foster the healthy and happy growth of young children. (Established under Article 8 of the Child Care Act)

In June 2022, KCPI integrated with the Central Support Center for Childcare and now collaborates with 138 local Support Centers for Childcare nationwide. As the central hub for childcare policy, we provide comprehensive support for childcare and parenting policies, ensuring a society where children, parents, and teachers can all thrive together.



### Support for childcare centers



We support high-quality childcare services through quality evaluation and consulting.

#### Quality evaluation for childcare centers

We regularly evaluate the quality of all childcare centers, as required by Article 30 of the Child Care Act, and manage and support them to ensure that they consistently provide high-quality childcare services.

#### Support for childcare centers to ensure consistent service quality(Self-Management Program)

We support year-based self-management of childcare centers and expert consulting for voluntary quality management so that they can manage the quality of their continuous and regular childcare services even after the evaluation

#### Provision of substitute teachers

We provide substitute teachers through local support centers for childcare to minimize any lack of childcare professionals.

#### Increase of public childcare centers

We support the increase in public childcare centers established and operated by the central or local governments (including commissioned operations).

#### Support for public -type childcare centers

We support the initiative to provide high-quality childcare and function as a public-type childcare infrastructure for young children for the selected childcare centers in the local areas.

### Support for teachers



We protect the rights of and provide emotional support for childcare professionals to improve their expertise and ensure a stable working environment.

#### Qualification management

We manage the qualification certification and issuance of certificates of qualification for directors and teachers of childcare centers ,as well as teachers of children with special needs, based on Article 21, Article 21-2, and Article 22 of the Child Care Act and Article 5 of the Enforcement Decree of the Act on Welfare Support for Children with Disabilities.

#### Professional development

- **Emotional care and Wellness Program:** We support strengthening childcare professionals' emotional competence by checking their mental state and reducing their stress.
- **Teacher training:** We operate the national educational curriculum in four areas to meet emerging needs, such as removing developmental delays and the emotional development gap among children.
- **Support for Vulnerable Childcare:** We support various childcare services and develop programs needed at childcare sites to eliminate blind spots in childcare services and improve the quality of childcare for vulnerable children.
- **Safety education for workers of children's facilities:** We operate safety education for workers at children's facilities and develop and distribute content to prevent safety accidents for children based on the Child Safety Management Act.

#### Protection of the rights of teachers

- **Protection of the rights:** We develop integrated support measures to protect teachers' education and childcare activities, promote the creation of a culture of mutual respect, and operate the Center for Childcare Professional Rights and Protection(Dampul).
- **Emotional support:** We support the recovery of the mental health of childcare professionals by developing and operating mental health screening tools and related services for childcare professionals.

#### Evaluation and management of continuing education institutions

We support evaluating and consulting for continuing education institutions to improve the quality of continuing education.

### Support for parents



We provide comprehensive childcare services for families with children.

#### Management of the hour-based childcare service program

We provide and manage the hour-based childcare service program, through which families can use childcare services hourly from designated providers and pay childcare fees for the hours used, even during home childcare.

#### Childcare capacity building(required training for parents, etc.)

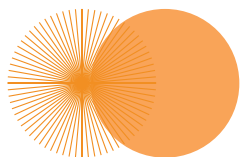
We support parents in strengthening their childcare capacity by providing education and counselling tailored to their needs and various content on childbirth and childcare.

#### Community-based support for parenting

We designate local community-based childcare centers in areas with limited accessibility to Support Centers for Childcare to provide user-oriented parenting support services and eliminate regional gaps.

#### Support for child development

We support children's healthy growth by providing developmental services from local Support Centers for Childcare, including early diagnosis and support for children with developmental delays.



Korea Childcare Promotion Institute  
3F-6F, Juyeon Building, 345 Cheongpa-ro, Yongsan-gu, Seoul, Korea  
Tel 82-2-1661-5666  
(09:00-18:00 Mon.-Fri. Closed on holidays)  
Fax 82-2-6901-0141  
Homepage [www.kcpi.or.kr](http://www.kcpi.or.kr) (Korea Childcare Promotion Institute)  
<https://central.childcare.go.kr> (Central Support Center for Childcare)  
Designed by YUWOLAE (82-2-859-2278)